

Chineham Gate

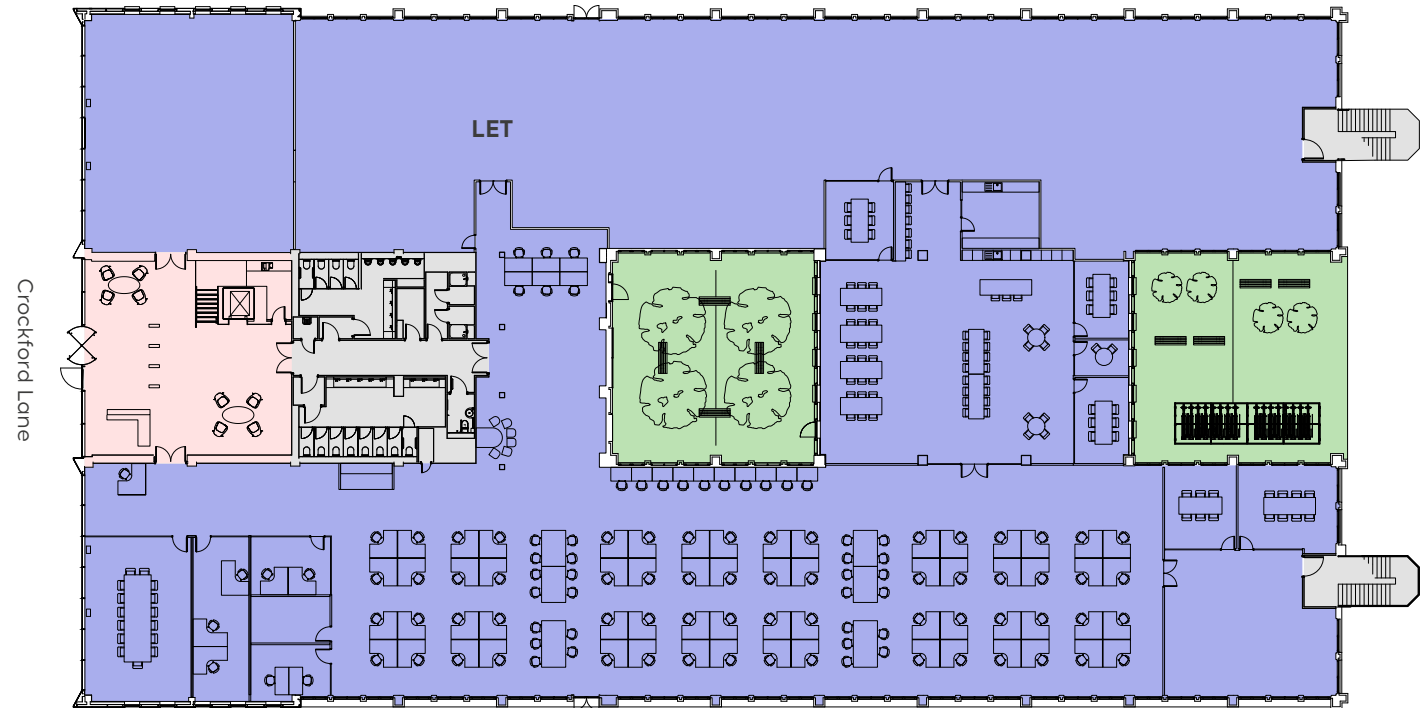
Chineham Park
Basingstoke RG24 8NA



Ground Floor Plan

24,000 sq ft / 2,229.8 sq m

Workstations	70
Hot desks	26
Offices	03
6 person meeting rooms	04
8 person meeting room	01
Breakout areas	02
Courtyards	02
Reception	01



- Available space
- Core
- Reception
- Courtyard

For indicative purposes only. Not to scale.



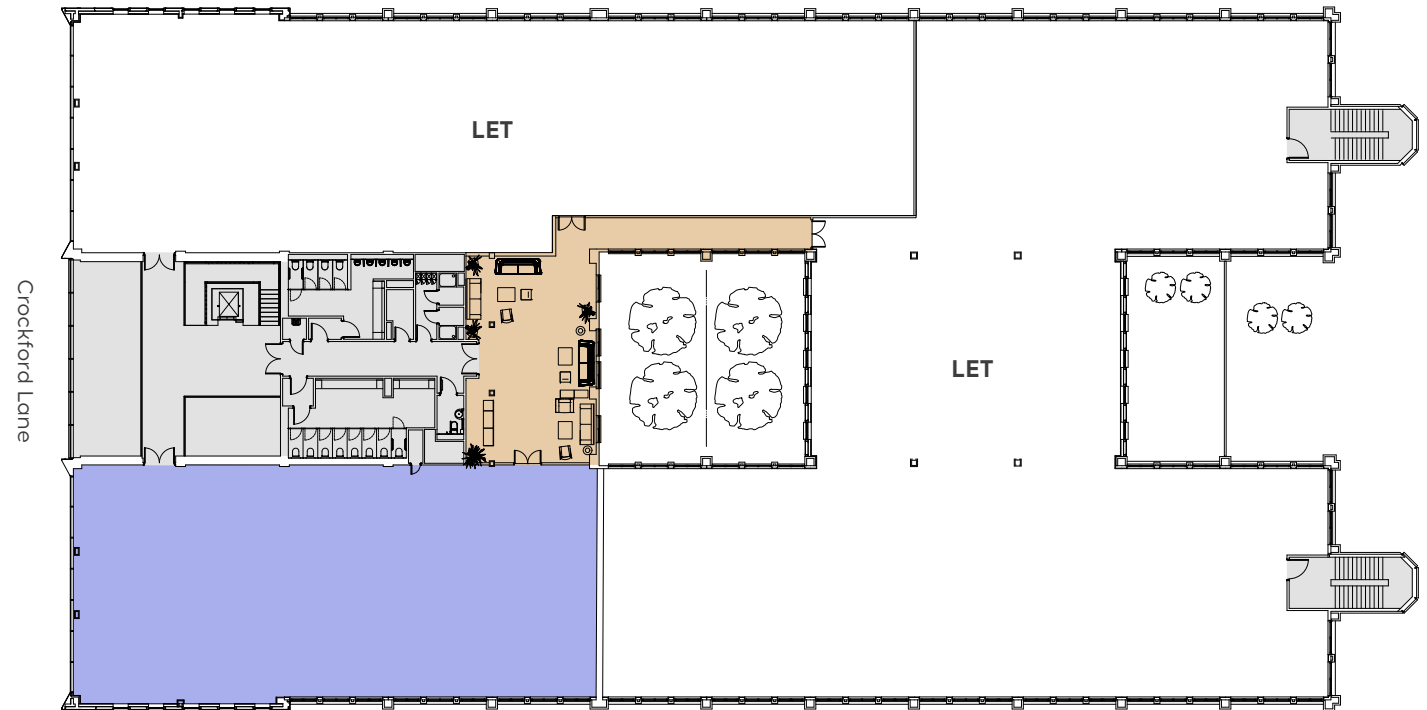
Chineham Gate

Chineham Park
Basingstoke RG24 8NA



Part First Floor Plan

4,456 sq ft / 414.0 sq m



- Available space
- Core
- Tenant lounge

For indicative purposes only. Not to scale.

